



“The Best in Condensate Management”

Zero Loss Demand Drain

Electric Operated Condensate Drain

# Accu-Drain



A fully automatic,  
zero loss drain.

Translucent reservoir  
for visual assurance  
of operation.

## Features

---

Zero Air Loss

---

Non clogging, Straight-Thru Flow  
POSI-VALVE design solenoid valve

---

Compact design

---

Translucent reservoir

---

Indicator lights

---

Multiple sizes

---

**Made in the USA**

## Benefits

---

Energy efficient

---

Passes rust and scale that would foul other  
solenoid valves - no strainers to clean

---

Can be installed in a tight space

---

Easy-to-see condensate level

---

“Quick check”

---

Easy to see status of drain

---

Sized for your needs

## Model No. ACD3 & ACD5

### Specifications ACD3

Inlets: (2) 1/2" NPT

Outlet: 1/4" NPT

Compressor Capacity: 450 CFM

Dryer Capacity: 900 CFM

Filter Capacity: 2700 CFM

Pressure: 0 to 200 PSI

Operating Temperature: 35° to 180° F.

Weight: 5 lbs.

Discharge: 8 ounces per cycle

Voltage: 115 - includes 6' power cord

### Specifications ACD5

Inlets: 3/4" & 1/2" NPT

Outlet: 1/4" NPT

Compressor Capacity: 1125 CFM

Dryer Capacity: 2250 CFM

Filter Capacity: 6750 CFM

Pressure: 0 to 200 PSI

Operating Temperature: 35° to 180° F.

Weight: 10 lbs.

Discharge: 21 ounces per cycle

Voltage: 115 - includes 6' power cord

### Materials

Reservoir: Aluminum and Composite

Control Stem: Teflon Coated

Float: Stainless Steel

Seat: Stainless Steel

Seal: Viton®\*

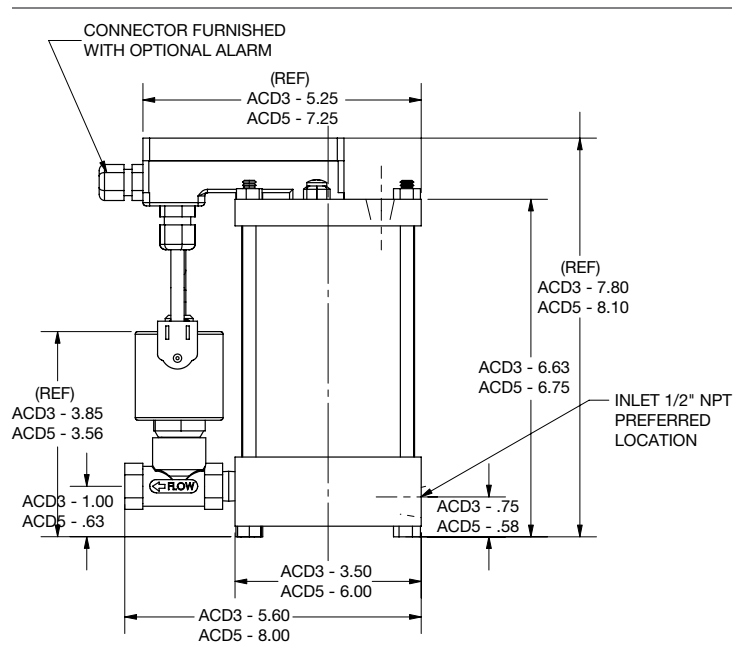
**Consult factory for Optional Remote Alarm  
Contacts and other Options**

### How It Works

Condensate enters the drain through one of two inlet connections. As condensate is collected and the translucent reservoir fills, a stainless steel level switch rises. When the condensate reaches a design level, the level switch sends a signal to the straight flow posi valve, which in turn opens a full-port drain.

When installed, a light indicates power is being supplied to the drain. A second light indicates when the valve has been actuated by the float switch. An override switch is provided for manual operation of the drain.

### Dimensions



**AIR SYSTEM PRODUCTS, INC.**

51 Beach Ave.

Lancaster, NY 14086

Phone: 716.683.0435

Fax: 716.683.7128

Email: info@airsyspro.com

www.airsyspro.com

All design specifications are subject to change without notice.

\* Viton is a registered trademark of Dupont Dow Elastomers.

Bulletin ACD3&5 01/13